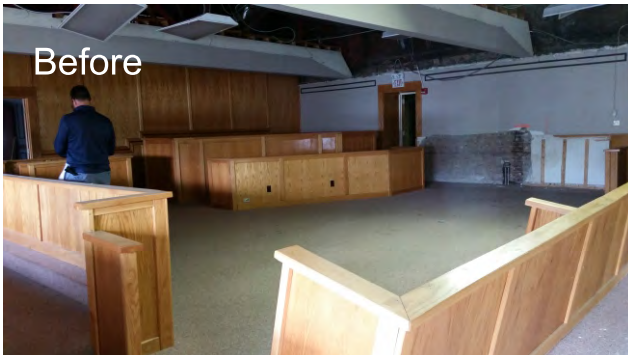


One of Lexington's most iconic buildings, the old Fayette County Courthouse, is being preserved and given new life and purpose. Located in the heart of downtown Lexington, this circa 1900 Courthouse is receiving a \$30 million renovation that will restore it as the primary landmark and centerpiece of the City of Lexington, Kentucky. Environmental Demolition Group is proud to have been selected to perform both the abatement and selective demolition on this Historic project.



Lexington Historic Courthouse



Before



After